

SOUTH AUSTRALIAN ECONOMIC INDICATORS

EMBARGO: 11:30AM (CANBERRA TIME) TUES 3 OCT 2000

C O N T E N T S

	<i>page</i>
Notes	2
REVIEW	
South Australian overview	3
Selected features	4
TABLES	
List of tables	5
Statistical summary	6
State summary	8
State accounts	9
International trade	10
Consumption and investment	14
Production	16
Consumer price index	20
Labour force and demography	21
Average weekly earnings	24
Financial markets	25
ADDITIONAL INFORMATION	
Publications source index	26

- For further information about these and related statistics, contact Rachel Smith on Adelaide 08 8237 7395, or the National Information Service on 1300 135 070.

NOTES

FORTHCOMING ISSUES	<table border="0"> <thead> <tr> <th style="text-align: left;"><i>ISSUE</i></th> <th style="text-align: left;"><i>RELEASE DATE</i></th> </tr> </thead> <tbody> <tr> <td>November 2000</td> <td>1 November 2000</td> </tr> <tr> <td>December 2000</td> <td>1 December 2000</td> </tr> <tr> <td>January 2001</td> <td>22 December 2000</td> </tr> <tr> <td>February 2001</td> <td>1 February 2001</td> </tr> <tr> <td>March 2001</td> <td>1 March 2001</td> </tr> <tr> <td>April 2001</td> <td>2 April 2001</td> </tr> </tbody> </table>	<i>ISSUE</i>	<i>RELEASE DATE</i>	November 2000	1 November 2000	December 2000	1 December 2000	January 2001	22 December 2000	February 2001	1 February 2001	March 2001	1 March 2001	April 2001	2 April 2001
<i>ISSUE</i>	<i>RELEASE DATE</i>														
November 2000	1 November 2000														
December 2000	1 December 2000														
January 2001	22 December 2000														
February 2001	1 February 2001														
March 2001	1 March 2001														
April 2001	2 April 2001														
ABOUT THIS PUBLICATION	<p><i>South Australian Economic Indicators</i> is a monthly publication which contains the latest available data at the time of preparation for a range of statistical series that have been identified as indicators of economic activity in this State. In a number of cases the figures presented are preliminary and subject to revision in subsequent issues.</p>														
CHANGES IN THIS ISSUE	<p>Due to the suspension of trend series data for retail turnover, tables 1, 2 and 9 now show seasonally adjusted data. For more information see <i>Retail Trade Australia, July 2000</i> (Cat. no. 8501.0).</p>														
DATA NOTE	<p>ABS statistical series are being impacted to varying degrees as a result of The New Tax System, introduced in Australia from 1 July 2000. The New Tax System includes the removal of Wholesale Sales Tax and the introduction of a Goods and Service Tax (GST), and as a result, a number of ABS data series will reflect significant immediate and subsequent impacts. In future issues, implications of The New Tax System on series will be footnoted at the bottom of tables. For more information please see the Notes section in relevant publications.</p>														
SYMBOLS AND OTHER USAGES	<table border="0"> <tr> <td>n.a.</td> <td>not available</td> </tr> <tr> <td>n.y.a.</td> <td>not yet available</td> </tr> <tr> <td>*</td> <td>subject to sampling variability too high for most practical purposes</td> </tr> <tr> <td>..</td> <td>not applicable</td> </tr> <tr> <td>0, 0.0</td> <td>nil, or rounded to zero</td> </tr> </table>	n.a.	not available	n.y.a.	not yet available	*	subject to sampling variability too high for most practical purposes	..	not applicable	0, 0.0	nil, or rounded to zero				
n.a.	not available														
n.y.a.	not yet available														
*	subject to sampling variability too high for most practical purposes														
..	not applicable														
0, 0.0	nil, or rounded to zero														
ROUNDING	<p>Where figures have been rounded, discrepancies may occur between sums of the component items and totals.</p>														
INFORMATION	<p>All data are original, unless otherwise stated. More detailed information on each series, including explanatory and technical notes, can be obtained from other Australian Bureau of Statistics publications or alternative data sources. To assist those seeking further information, the series presented in the statistical and state summaries provides a reference to the Publication Source Index which is at the end of this publication.</p>														

I. Crettenden
Regional Director
South Australia

OVERVIEW

The most recent economic indicator data for South Australia are provided below. Unless otherwise stated the data in the analysis are presented in trend terms.

INTERNATIONAL TRADE

The value of South Australian merchandise exports in original terms for the month of July was \$560.3m. This is a decrease of 0.3% over the value for June and an increase of 26.8% over July 1999. Of total merchandise exports Road vehicle parts and accessories contributed 19.8% and Wine 16.1%. The value of merchandise imports released from Customs control in original terms for South Australia was \$323.5m in July. This is a decrease of 26.0% over the value for June and a decrease of 9.0% on July 1999.

CONSUMPTION AND INVESTMENT

The seasonally adjusted estimate of retail turnover fell 8.3% in July 2000 to \$866.9m. This follows an increase of 4.3% in June resulting from unusually high spending prior to the introduction of the GST on 1 July 2000. Nationally the figure fell 8.7%.

New motor vehicle registrations rose 2.8% in the month of July. Passenger vehicle registrations also rose (3.4%) while Other vehicle registrations fell (0.3%). Over the 12 months to July new registrations have fallen 2.6%. In original terms there were 4,615 new motor vehicle registrations for the month.

Private new capital expenditure increased 4.5% in the June quarter to \$650.0m and is 18.4% higher than the June quarter 1999. Expenditure rose on New buildings and structures (17.4%) and fell slightly on Equipment, plant and machinery (0.2%) on the previous quarter. In original terms private new capital expenditure for the quarter was \$696.0m.

HOUSING

The decline in the total dwelling units approved has continued over the last six months. For July 2000, total dwelling units approved declined by 8.9% to 594 dwellings. This is 18.6% lower than the level 12 months ago. The number of private sector houses approved continued to fall for the sixth consecutive month to 429 dwellings. This figure is 27.9% lower than the number recorded in July 1999.

CONSUMER PRICE INDEX

The Consumer Price Index (all groups) in Adelaide increased by 0.6% to 127.6 in the June quarter of 2000, and by 3.2% over the level recorded twelve months previously. The main contributors to the recent quarterly growth were Clothing (up 2.1%) and Transportation (up 1.2%).

LABOUR FORCE AND DEMOGRAPHY

The number of employed persons in South Australia for August (680,000) is 2.4% higher than the level of twelve months ago (664,200).

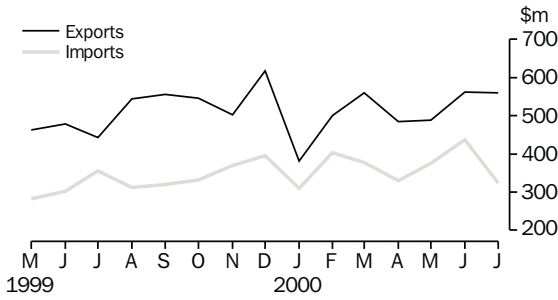
The unemployment rate for South Australia was 7.8% (57,000 persons) in August, lower than the 8.3% (60,400 persons) recorded in August 1999.

FINANCIAL MARKETS

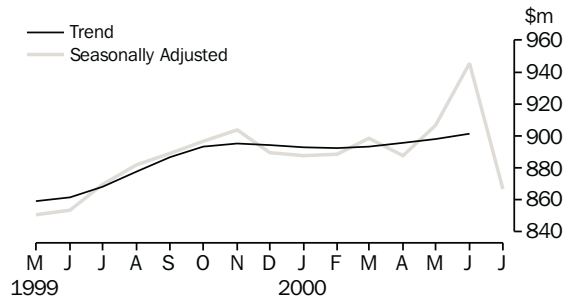
The value of secured housing finance commitments (excluding alterations and additions) continued the decline evident since December last year, falling 1.8% in July to \$336.0m which was marginally higher than July 1999.

SELECTED FEATURES

MERCHANDISE EXPORTS AND IMPORTS

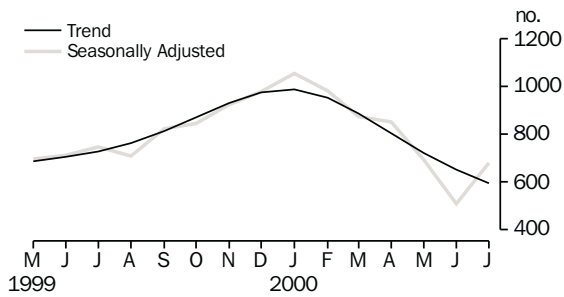


RETAIL TURNOVER(a)

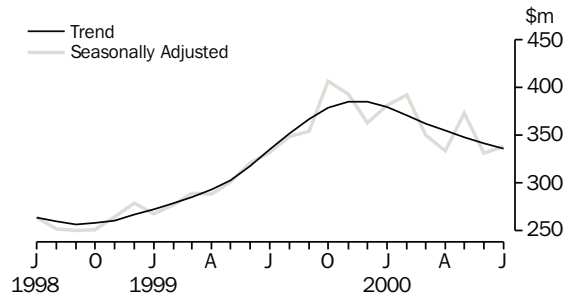


(a) Retail turnover trend series has been suspended. For more information see Data note on page 2.

DWELLING UNITS APPROVED

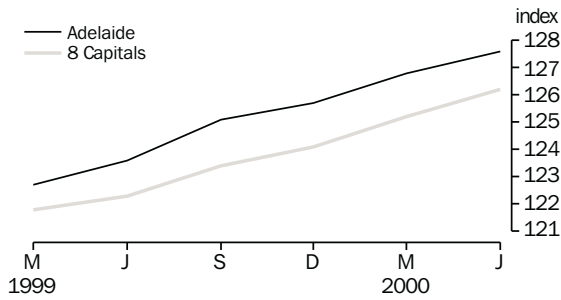


SECURED HOUSING FINANCE COMMITMENTS (a)

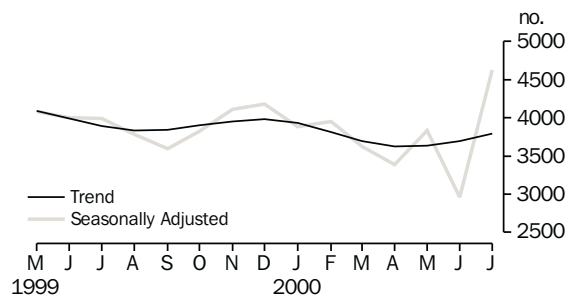


(a) Excludes alterations and additions. Includes refinancing.

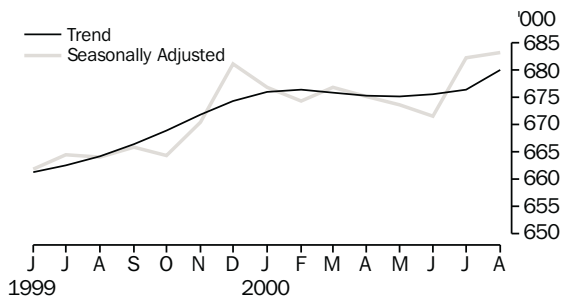
CONSUMER PRICE INDEX



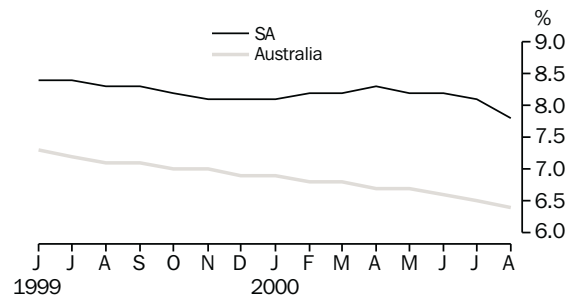
MOTOR VEHICLE REGISTRATIONS



EMPLOYED PERSONS



UNEMPLOYMENT RATE, TREND



LIST OF TABLES

			Page
STATISTICAL SUMMARY	1	Statistical summary	6
	2	State summary	8
STATE ACCOUNTS	3	State accounts at current prices	9
	4	State accounts at chain volume measures	9
INTERNATIONAL TRADE	5	Merchandise exports, by selected commodity group	10
	6	Merchandise exports, by selected countries	11
	7	Merchandise exports, by industry of origin	12
	8	Merchandise imports, by selected commodity group	13
CONSUMPTION AND INVESTMENT	9	Turnover of retail establishments, by industry—trend	14
	10	New motor vehicle registrations, by type of vehicle	14
	11	Actual private new capital expenditure, by selected industry and type of asset	15
	12	Tourist accommodation	15
PRODUCTION	13	Building approvals	16
	14	Building commencements	17
	15	Value of building work done and completed during period	18
	16	Production, livestock products and selected commodities	19
CONSUMER PRICE INDEX	17	Consumer price index, by group—Adelaide	20
LABOUR FORCE AND DEMOGRAPHY	18	Estimated resident population and components of population change	21
	19	Births, deaths, marriages and divorces	21
	20	Civilian labour force status	22
	21	Civilian labour force, unemployment and participation rates	23
AVERAGE WEEKLY EARNINGS	22	Average weekly earnings of employees	24
FINANCIAL MARKETS	23	Secured housing finance commitments	25
	24	Finance commitments	25

Indicator	Period	South Australia			Australia			SA as a % of Aust.	Source index
		Number	% change from		Number	% change from			
			Previous period	Same period previous year		Previous period	Same period previous year		
State accounts									
Domestic final demand									
Current prices trend (\$m)	Jun qtr 00	11 152	1.6	7.9	164 742	1.6	6.7	6.8	(1)
Chain volume measures trend (\$m)	Jun qtr 00	10 910	1.0	5.9	162 223	1.0	5.3	6.7	(1)
Private final consumption expenditure									
Current prices trend (\$m)	Jun qtr 00	6 751	1.1	5.7	95 007	1.2	5.2	7.1	(1)
Chain volume measures trend (\$m)	Jun qtr 00	6 643	0.7	4.4	93 580	0.8	3.9	7.1	(1)
Private gross fixed capital formation									
Current prices trend (\$m)	Jun qtr 00	1 853	2.3	15.0	31 990	2.1	7.8	5.8	(1)
Chain volume measures trend (\$m)	Jun qtr 00	1 810	2.9	11.8	31 906	1.8	7.4	5.7	(1)
Compensation of employees									
Current prices trend (\$m)	Jun qtr 00	5 073	1.3	3.7	10 246	0.8	3.2	49.5	(1)
International accounts									
Exports (\$m)	Jul 00	560.3	-0.3	26.8	8 863.5	3.7	32.9	6.3	(2)
Imports (\$m)	Jul 00	323.5	-26.0	-9.0	9 813.6	-6.4	20.0	3.3	(2)
Consumption and investment									
Retail turnover									
Current prices original (\$m)	Jul 00	839.9	-7.1	-3.4	11 671.6	-7.0	-2.0	7.2	(3)
Current prices seasonally adjusted (\$m)	Jul 00	866.9	-8.3	-0.3	12 010.7	-8.7	0.3	7.2	(3)
Chain volume measures original (\$m)	Jun qtr 00	2 580.7	2.4	5.8	35 402.0	2.9	4.2	7.3	(3)
New motor vehicle registrations									
Original (no.)	Jul 00	4 615	26.0	12.1	78 958	29.7	22.6	5.8	(4)
Trend (no.)	Jul 00	3 793	2.8	-2.6	63 030	2.5	1.2	6.0	(4)
Private new capital expenditure									
Current prices original (\$m)	Jun qtr 00	696	15.4	38.1	11 341	16.8	6.7	6.1	(5)
Current prices trend (\$m)	Jun qtr 00	650	4.5	18.4	10 495	0.7	-2.2	6.2	(5)
Private new capital expenditure (\$m)	1999-00	2 455	7.8	7.8	42 427	-5.0	-5.0	5.8	(5)
Takings, licensed hotels, motels, guest houses and apartments with facilities (\$m)	Mar qtr 00	50.4	-1.2	10.8	1 088.6	-2.1	8.5	4.6	(6)
Production									
Dwelling unit approvals									
Original (no.)	Jul 00	710	18.7	-15.7	9 281	-15.3	-36.8	7.7	(7)
Trend (no.)	Jul 00	594	-8.9	-18.6	10 218	-9.4	-27.6	5.8	(7)
Dwelling units commenced (no.)	Mar qtr 00	2 403	3.3	46.1	42 122	-0.9	22.4	5.7	(8a)
Value of non-residential building approvals (\$m)	Jul 00	60.6	148.9	91.2	1 156.6	16.8	-6.3	5.2	(7)
Value of total building activity									
Commenced (\$m)	Mar qtr 00	496.2	15.9	12.8	8 924.9	-2.0	16.4	5.6	(8)
Work done (\$m)	Mar qtr 00	426.5	-0.4	26.6	9 157.2	-7.2	12.7	4.7	(8)
Work yet to be done (\$m)	Mar qtr 00	516.6	18.3	16.2	12 767.5	1.4	-1.8	4.0	(8)
Value of engineering construction work done (\$m)	Mar qtr 00	316.5	8.9	42.7	4 419.3	-8.6	-0.5	7.2	(9)
Manufacturing production									
Red meat (tonnes)	Jun qtr 99	54 303	1.7	23.7	772 534	5.0	4.4	7.0	(11)
Mineral exploration expenditure (other than for petroleum) (\$m)	Mar qtr 00	3.8	-43.3	-50.0	136.7	-22.7	-18.3	2.8	(12)

Indicator	Period	South Australia			Australia			SA as a % of Aust.	Source index
		Number	% change from		Number	% change from			
			Previous period	Same period previous year		Previous period	Same period previous year		
Prices(a)									
CPI—All groups (index no.)	Jun qtr 00	127.6	0.6	3.2	126.2	0.8	3.2	..	(13)
Price index of materials used in house building (index no.)	Jun qtr 00	129.7	1.7	3.6	125.5	1.4	5.3	..	(14)
Price index of materials used in building other than houses (index no.)	Jun qtr 00	117.6	1.1	1.7	117.4	0.9	1.7	..	(15)
Price index of established houses (index no.)	Jun qtr 00	126.9	2.7	8.9	147.3	2.4	9.7	..	(16)
Price index of project homes (index no.)	Jun qtr 00	130.4	0.3	8.8	122.9	0.4	7.1	..	(16)
Labour force and demography									
Population (resident at end qtr) ('000)	Dec qtr 99	1 495.8	0.1	0.4	19 080.8	0.3	1.2	7.8	(17)
Short-term overseas visitor arrivals (no.)	Jun 00	9 137	39.3	35.4	347 943	9.0	9.7	2.6	(21)
Short-term resident departures (no.)	Jun 00	14 484	-10.3	17.1	303 760	6.6	5.0	4.8	(21)
Labour force									
Original ('000)	Aug 00	733.7	-0.1	2.2	9 649.7	-0.8	2.8	7.6	(18)
Trend ('000)	Aug 00	737.5	0.1	1.8	9 742.5	0.2	2.6	7.6	(18)
Employed persons									
Original ('000)	Aug 00	678.9	-0.3	2.9	9 048.4	-1.2	3.6	7.5	(18)
Trend ('000)	Aug 00	680.0	0.3	2.4	9 119.2	0.3	3.5	7.5	(18)
Participation rate									
Original(b) (%)	Aug 00	60.8	-0.2	0.7	63.3	-0.6	0.8	..	(18)
Trend(b) (%)	Aug 00	61.2	0.1	0.8	63.9	0.0	0.7	..	(18)
Unemployment rate									
Original(b) (%)	Aug 00	7.5	0.2	-1.0	6.2	0.3	-0.8	..	(18)
Trend(b) (%)	Aug 00	7.8	-0.2	-0.5	6.4	-0.1	-0.7	..	(18)
Job vacancies ('000)	May 00	5.0	-11.9	14.3	106.8	-5.2	20.2	4.7	(19)
Industrial disputes ('000 working days lost)	Jun 00	0.7	-30.0	-58.8	61.2	-7.3	113.2	1.1	(20)
Income									
Average weekly earnings (full-time adults; ordinary time)									
Original (\$)	May 00	726.80	0.5	3.9	782.60	1.0	4.3	..	(22)
Trend (\$)	May 00	728.40	1.4	4.1	783.70	1.4	4.6	..	(22)
Wage cost index (total hourly rate excluding bonuses)(c) (index no.)	Jun 00	108.1	0.7	3.2	108.4	0.6	2.8	..	(23)
Financial markets									
Secured housing finance(d) (\$m)	Jul 00	318.0	-10.2	-0.3	5 244.0	-6.4	-11.0	6.1	(24)
Finance commitments									
Personal (\$m)	Jul 00	259.9	-13.9	2.0	4 031.8	-18.5	0.1	6.4	(25)
Commercial (\$m)	Jul 00	627.0	-46.6	21.7	16 583.2	-25.9	13.7	3.8	(25)
Lease (\$m)	Jul 00	9.8	-46.6	-58.1	389.3	-61.0	-54.3	2.5	(25)
Interest rates(b)									
Banks new housing loans (%)	Jul 00	7.80	0.00	1.25	..	(26)
Bank loans—small, medium business(e) (%)	Jul 00	8.90	0.05	1.45	..	(26)
Bank loans—large business (%)	Jul 00	9.35	0.05	1.40	..	(26)
(a) Base year of each index 1989-90=100.									
(b) Change is shown in terms of percentage points.									
(c) Base year of index Sep 1997=100.									
(d) Excludes alterations and additions. Includes refinancing.									
(e) Rate for business loans over \$50,000.									

<i>Indicator</i>	<i>Period</i>	<i>NSW</i>	<i>Vic.</i>	<i>Qld</i>	SA	<i>WA</i>	<i>Tas.</i>	<i>NT</i>	<i>ACT</i>	<i>Source index</i>
SELECTED INDICATORS										
CPI—All groups(a) (index no.)	Jun qtr 00	127.0	125.6	126.4	127.6	124.0	126.5	125.7	125.9	(13)
Participation rate trend (%)	Aug 00	62.9	63.9	65.5	61.2	66.3	59.5	67.3	73.0	(18)
Unemployment rate trend (%)	Aug 00	5.5	6.3	7.6	7.8	6.2	9.5	5.0	4.6	(18)
Average weekly earnings (full-time adults; ordinary time) trend (\$)	May 00	824.90	765.80	724.90	728.40	804.10	736.60	797.40	914.00	(22)

SELECTED INDICATORS PER HEAD OF POPULATION(b)

State final demand										
Chain volume measures trend (\$'000)	Jun qtr 00	8.7	8.5	8.2	7.3	8.3	6.9	10.3	15.9	(1)
Retail turnover										
Current prices original (\$)	Jul 00	626.3	575.3	638.6	561.5	627.3	527.1	733.9	761.9	(3)
Current prices seasonally adjusted (\$)	Jul 00	644.0	594.4	651.8	579.6	655.3	563.5	687.6	760.9	(3)
New motor vehicle registrations trend (no. per '000 population)	Jul 00	3.4	3.4	3.5	2.5	3.2	2.3	3.2	3.5	(4)
Private new capital expenditure										
Current prices trend (\$)	Jun qtr 00	598.8	565.6	528.3	434.6	660.7	266.0	643.3	340.6	(5)
Dwelling unit approvals										
Original (no. per '000 population)	Jul 00	0.453	0.692	0.564	0.400	0.916	0.194	0.726	0.656	(7)
Trend (no. per '000 population)	Jul 00	0.478	0.735	0.653	0.436	0.759	0.298	0.535	0.460	(7)
Secured housing finance(c) (\$)	Jul 00	326.6	246.5	229.4	212.6	340.5	166.0	175.0	282.8	(24)

PERCENTAGE CHANGE FROM PREVIOUS PERIOD

State final demand										
Chain volume measures trend (%)	Jun qtr 00	0.9	1.1	1.0	1.0	-0.1	1.5	-1.3	2.1	(1)
Retail turnover										
Current prices original (%)	Jul 00	-7.3	-9.3	-2.8	-7.1	-8.2	-6.5	0.5	-10.9	(3)
Current prices seasonally adjusted (%)	Jul 00	-9.0	-11.5	-4.0	-8.3	-9.4	-4.3	-4.8	-15.3	(3)
New motor vehicle registrations trend (%)	Jul 00	2.5	1.8	3.1	2.8	4.5	-2.0	0.8	-0.3	(4)
Private new capital expenditure										
Current prices trend (%)	Jun qtr 00	2.7	-1.6	-0.8	4.5	-0.8	10.6	-18.8	6.0	(5)
Dwelling unit approvals										
Original (%)	Jul 00	-22.3	2.6	-22.0	18.7	-34.5	-7.7	-34.0	-62.7	(7)
Trend (%)	Jul 00	-11.5	-5.8	-12.6	-8.9	-5.8	-10.0	0.5	-14.4	(7)
CPI—All groups (%)	Jun qtr 00	1.0	0.7	0.7	0.6	0.7	1.0	1.0	0.8	(13)
Participation rate trend(d) (%)	Aug 00	0.0	0.2	0.1	0.1	-0.1	0.2	-0.3	0.2	(18)
Unemployment rate trend(d) (%)	Aug 00	-0.1	-0.1	0.0	-0.2	0.0	0.1	-0.1	-0.2	(18)
Average weekly earnings (full-time adults; ordinary time) trend (%)	May 00	1.5	1.0	1.1	1.4	2.0	1.7	1.3	1.6	(22)
Secured housing finance (%)	Jul 00	-11.7	-6.5	2.5	-10.2	3.7	9.9	9.7	-12.9	(24)

(a) Base year of index 1989-90 = 100.

(b) The latest quarterly estimate of Australian resident population has been used to calculate ratios for subsequent periods.

(c) Excludes alterations and additions. Includes refinancing.

(d) Change is shown in terms of percentage points.

3

STATE ACCOUNTS AT CURRENT PRICES

Period	Final consumption expenditure		Gross fixed capital formation		State final demand	Gross State product	Compensation of employees
	Households	General government	Private	Public			
ANNUAL (\$m)							
1997-98	24 390	7 907	6 705	1 310	40 312	39 652	18 905
1998-99	25 534	8 017	6 173	1 374	41 098	40 573	19 284
1999-00	26 503	8 360	(a)10 237	(a)-1 547	43 553	n.a.	19 963
QUARTERLY, TREND (\$m)							
1998-99							
March	6 346	2 012	1 499	339	10 196	n.a.	4 823
June	6 388	2 010	1 575	359	10 333	n.a.	4 894
1999-00							
September	6 477	2 011	1 668	379	10 534	n.a.	4 932
December	6 585	2 054	1 750	380	10 765	n.a.	4 961
March	6 678	2 120	1 812	369	10 978	n.a.	5 009
June	6 751	2 172	1 853	358	11 152	n.a.	5 073

(a) The negative figure for Public gross fixed capital formation and the positive figure for Private gross fixed capital formation is the result of the sale of the South Australian electrical transmission network in December quarter 1999. For more information see *National Income, Expenditure and Product, Australian National Accounts, June 2000* (Cat. no. 5206.0).

Source: *Australian National Accounts: Quarterly State Details* (Cat. no. 5206.0.40.001), and *Australian National Accounts: State Accounts* (Cat. no. 5220.0).

4

STATE ACCOUNTS AT CHAIN VOLUME MEASURES(a)

Period	Final consumption expenditure		Gross fixed capital formation		State final demand	Gross State product
	Households	General government	Private	Public		
ANNUAL (\$m)						
1997-98	24 390	7 907	6 714	1 309	40 320	39 652
1998-99	25 200	7 841	6 066	1 386	40 493	40 493
1999-00	26 218	8 224	(b)10 013	(b)-1 456	42 999	n.a.
QUARTERLY, TREND (\$m)						
1998-99						
March	6 341	2 000	1 506	341	10 188	n.a.
June	6 365	1 995	1 574	364	10 298	n.a.
1999-00						
September	6 434	1 999	1 641	387	10 461	n.a.
December	6 524	2 033	1 701	387	10 642	n.a.
March	6 596	2 075	1 759	371	10 801	n.a.
June	6 643	2 098	1 810	355	10 910	n.a.

(a) Reference year for chain volume measures is 1996-97.

(b) The negative figure for Public gross fixed capital formation and the positive figure for Private gross fixed capital formation is the result of the sale of the South Australian electrical transmission network in December quarter 1999. For more information see *National Income, Expenditure and Product, Australian National Accounts, June 2000* (Cat. no. 5206.0).

Source: *Australian National Accounts: Quarterly State Details* (Cat. no. 5206.0.40.001), and *Australian National Accounts: State Accounts* (Cat. no. 5220.0).

5

MERCHANDISE EXPORTS, BY SELECTED COMMODITY GROUP(a)

<i>Period</i>	<i>Meat and meat preparations</i>	<i>Wheat</i>	<i>Wine</i>	<i>Wool and sheepskins (excl. wool tops)</i>	<i>Machinery</i>	<i>Metals and metal manufactures</i>	<i>Fish and crustaceans</i>	<i>Road vehicles, parts and accessories</i>	<i>Petroleum and petroleum products</i>	<i>Total</i>
	\$'000	\$'000	\$'000	\$'000	\$'000	\$'000	\$'000	\$'000	\$'000	\$'000
1997-98	218 252	446 839	564 093	287 824	401 749	574 407	236 353	479 396	237 824	4 986 705
1998-99	198 541	567 812	693 733	212 226	384 702	543 675	252 592	651 949	154 425	5 332 300
1999-00	160 480	473 086	899 344	179 340	353 133	804 371	393 877	883 897	218 466	6 183 494
1998-99										
February	19 308	41 388	50 984	18 309	29 475	47 209	20 912	23 346	8 932	410 680
March	17 378	66 757	66 841	16 754	29 501	58 757	18 415	102 037	11 714	553 792
April	12 617	34 910	56 286	10 319	41 314	39 915	20 369	26 728	4 080	382 320
May	16 087	37 891	69 509	20 656	34 714	57 271	20 328	28 067	19 003	461 901
June	13 274	44 468	77 522	13 202	29 477	50 927	17 824	90 638	14 832	478 816
1999-00										
July	11 764	27 968	60 499	10 288	29 602	53 204	30 310	41 016	16 088	441 950
August	7 777	34 802	81 661	12 680	27 056	61 903	81 050	97 193	2 428	543 384
September	10 284	52 367	100 662	15 114	37 219	57 003	57 030	59 781	17 842	556 471
October	12 408	50 939	96 166	16 327	29 940	69 728	28 318	65 627	28 792	546 911
November	13 487	7 829	54 034	16 631	31 130	70 076	26 161	141 478	3 439	502 796
December	12 091	73 023	50 412	13 568	26 925	71 545	21 104	179 287	19 102	618 005
January	11 676	42 774	46 507	9 949	20 727	49 340	24 759	24 514	17 151	381 964
February	15 413	42 027	61 522	14 350	26 925	77 412	19 371	44 842	26 572	499 394
March	16 203	37 670	81 909	15 355	31 158	74 430	21 515	80 430	26 155	558 932
April	15 688	48 190	81 644	13 701	26 261	69 225	28 337	21 432	27 316	483 828
May	16 988	31 684	93 796	20 262	33 446	69 203	26 958	64 966	3 473	487 893
June	16 700	23 814	90 533	21 116	32 744	81 301	28 964	63 329	30 107	561 966
2000-01										
July	16 679	18 872	90 152	17 930	31 538	66 500	36 737	111 060	28 447	560 251

(a) Restrictions are placed on the release of statistics for certain commodities for reasons of confidentiality. These restrictions do not affect total export and import figures, but they can affect some items within commodity, industry and country tables. See *International Trade* (Cat. no. 5422.0), Explanatory Notes, paragraph 30, for more details.

Source: Unpublished data, *International Merchandise Trade*.

6

MERCHANDISE EXPORTS, BY SELECTED COUNTRIES

Period	European Union					Southeast and Northeast Asia				
	United States of America	Middle East	United Kingdom	Total European Union	New Zealand	Japan	China	Hong Kong	ASEAN	Total
	\$'000	\$'000	\$'000	\$'000	\$'000	\$'000	\$'000	\$'000	\$'000	\$'000
1997-98	632 203	389 766	424 251	849 932	354 698	612 475	331 489	239 652	491 573	2 023 385
1998-99	705 166	640 412	476 340	928 468	385 513	625 530	302 776	219 536	432 730	1 898 837
1999-00	954 488	724 821	625 156	1 072 473	446 035	786 609	315 001	255 569	490 603	2 295 190
1998-99										
February	33 065	39 031	32 558	78 213	29 340	52 745	20 986	21 834	35 769	157 442
March	83 983	87 010	48 802	96 079	33 812	62 499	29 294	17 954	47 444	189 083
April	45 095	34 532	36 364	73 442	29 851	33 779	17 751	15 279	41 873	133 758
May	50 172	41 235	44 124	95 851	31 605	73 576	29 447	16 125	35 990	189 921
June	98 299	38 031	49 708	80 488	47 036	54 060	22 775	13 782	47 319	159 292
1999-00										
July	54 593	31 570	39 127	80 383	39 266	72 253	16 859	15 394	27 998	162 944
August	87 288	50 910	58 622	101 012	46 379	104 035	18 156	13 326	36 480	202 395
September	57 055	41 511	73 174	112 056	44 181	94 402	31 426	22 587	43 853	214 621
October	46 383	80 029	78 330	117 681	49 572	62 459	32 529	25 385	40 020	203 079
November	102 334	82 481	33 828	67 501	40 223	36 313	31 053	22 591	46 641	169 668
December	147 939	130 984	36 575	76 383	37 356	40 148	14 457	27 195	40 711	171 092
January	40 261	53 129	30 102	63 379	22 005	37 506	20 084	29 260	25 167	142 744
February	55 875	71 510	42 617	73 030	44 832	48 221	41 265	20 241	38 646	206 501
March	131 298	24 442	53 269	85 668	37 877	65 469	43 237	26 342	41 680	215 769
April	68 381	66 614	58 962	99 714	19 532	62 667	21 328	20 398	39 863	187 225
May	101 180	30 245	64 293	101 328	23 024	53 548	19 306	14 037	48 854	173 002
June	61 899	61 397	56 258	94 338	41 788	109 588	25 302	18 814	60 689	246 152
2000-01										
July	99 739	64 937	54 920	84 261	34 671	82 598	24 303	22 693	50 181	209 871

Source: Unpublished data, International Merchandise Trade.

7

MERCHANDISE EXPORTS, BY INDUSTRY OF ORIGIN(a)

Period	Manufacturing								Total
	Agriculture, forestry and fishing(b)	Mining	Food, beverages and tobacco	Petroleum, coal, chemical associated product	Metal product	Machinery and equipment	Other manu- facturing	Other industries/ confidential	
	\$'000	\$'000	\$'000	\$'000	\$'000	\$'000	\$'000	\$'000	\$'000
1997-98	1 188 938	137 851	1 205 265	292 175	615 344	994 597	262 815	289 719	4 986 705
1998-99	1 352 378	73 125	1 282 013	285 053	581 372	1 172 362	264 973	321 024	5 332 300
1999-00	915 387	135 349	1 517 703	369 481	835 862	1 412 754	256 396	740 561	6 183 494
1998-99									
February	121 576	9 484	102 252	19 255	49 565	63 070	21 822	23 655	410 680
March	151 531	511	114 334	23 276	63 539	145 427	30 604	24 571	553 792
April	84 375	7 741	105 733	14 469	41 171	79 437	26 041	23 354	382 320
May	110 159	8 781	122 596	30 879	61 320	72 831	24 787	30 548	461 901
June	89 505	3 320	122 939	26 617	54 826	132 292	19 834	29 484	478 816
1999-00									
July	82 083	7 380	120 642	26 813	54 441	84 369	19 700	46 522	441 950
August	67 671	9 096	118 366	14 845	63 726	139 131	23 206	107 342	543 384
September	74 415	1 155	168 993	30 754	60 553	115 282	20 174	85 146	556 471
October	85 540	19 297	143 971	40 142	71 232	110 813	24 368	51 548	546 911
November	41 532	7 771	97 497	16 152	72 647	185 987	22 701	58 511	502 796
December	102 230	23 130	86 989	34 314	75 511	220 588	20 718	54 524	618 005
January	81 352	1 897	92 547	26 226	50 560	54 575	17 884	56 923	381 964
February	69 558	20 910	110 729	39 201	81 114	87 688	21 193	69 001	499 394
March	91 256	1 157	136 228	40 093	77 206	127 314	23 185	62 493	558 932
April	77 625	20 118	140 519	40 372	71 716	62 379	19 912	51 186	483 828
May	73 845	1 208	148 636	16 480	72 947	114 008	20 553	40 216	487 893
June	68 281	22 230	152 587	44 089	84 209	110 620	22 800	57 149	561 966
2000-01									
July	64 224	6 154	160 918	42 413	70 824	157 956	22 118	35 645	560 251

(a) Restrictions are placed on the release of statistics for certain commodities for reasons of confidentiality. These restrictions do not affect total export and import figures, but they can affect some items within commodity, industry and country tables. See *International Trade* (Cat. no. 5422.0), Explanatory Notes, paragraph 30, for more details.

(b) The latest 12 months of bulk barley exports data—as included in the Agriculture, forestry and fishing group—are confidential. Bulk barley details are only included in the data for earlier periods.

Source: Unpublished data, *International Merchandise Trade*.

8

MERCHANDISE IMPORTS, BY SELECTED COMMODITY GROUP(a)

<i>Period</i>	<i>Food, beverages and tobacco</i>	<i>Petroleum and petroleum products</i>	<i>Chemicals</i>	<i>Textiles</i>	<i>Metals and metal manufactures</i>	<i>Machinery</i>	<i>Road vehicle parts and accessories</i>	<i>Other manufactured goods</i>	<i>Total</i>
	\$'000	\$'000	\$'000	\$'000	\$'000	\$'000	\$'000	\$'000	\$'000
1997-98	148 771	445 218	274 741	93 815	280 562	1 061 260	772 203	739 266	3 940 198
1998-99	162 784	271 492	281 097	96 052	264 732	917 879	812 096	765 643	3 716 152
1999-00	163 508	515 475	263 959	97 019	262 768	1 164 741	834 845	845 933	4 319 224
1998-99									
February	11 547	31 555	29 787	7 365	19 645	64 860	68 686	56 383	302 155
March	16 139	26 963	29 953	7 757	23 301	71 981	77 956	79 638	348 969
April	12 634	25 605	34 572	8 490	22 564	67 602	73 535	57 729	314 900
May	9 387	27 892	24 936	8 295	18 148	75 202	49 320	55 967	283 113
June	12 748	22 304	15 461	7 490	19 168	72 618	67 354	71 583	301 272
1999-00									
July	14 835	58 324	16 552	8 454	19 097	82 015	78 647	64 793	355 421
August	12 100	27 827	14 014	8 245	19 964	80 979	72 125	65 350	311 678
September	15 546	92	17 923	8 064	20 812	104 051	68 466	73 988	320 308
October	16 262	42 269	14 472	7 989	19 249	81 573	71 316	69 205	332 726
November	19 706	81 584	18 593	7 803	20 635	75 748	59 410	73 473	369 548
December	15 031	73 789	25 809	6 376	22 494	120 636	49 107	69 831	395 215
January	11 042	40 216	27 862	6 948	20 703	71 575	56 419	61 667	309 362
February	13 633	36 561	17 170	7 363	22 138	149 008	62 560	74 495	403 840
March	10 534	23 846	36 835	8 792	24 635	100 622	77 585	73 811	376 984
April	8 677	48 856	23 130	9 829	23 748	78 912	63 183	59 870	330 647
May	12 970	150	26 399	8 749	25 246	103 119	93 658	89 402	376 391
June	13 173	81 962	25 199	8 406	24 045	116 504	82 369	70 048	437 104
2000-01									
July	12 672	12 429	15 595	7 476	27 337	80 767	88 021	64 437	323 452

(a) Restrictions are placed on the release of statistics for certain commodities for reasons of confidentiality. These restrictions do not affect total export and import figures, but they can affect some items within commodity, industry and country tables. See *International Trade* (Cat. no. 5422.0), Explanatory Notes, paragraph 30, for more details.

Source: Unpublished data, *International Merchandise Trade*.

9

TURNOVER OF RETAIL ESTABLISHMENTS, BY INDUSTRY—SEASONALLY ADJUSTED(a)

Period	Food retailing	Department stores	Clothing and soft good retailing	Household good retailing	Recreational good retailing	Other retailing	Hospitality and services	Total
	\$m	\$m	\$m	\$m	\$m	\$m	\$m	\$m
1998-99								
May	372.4	90.4	49.8	82.0	30.2	83.1	144.3	852.2
June	369.2	91.4	50.6	85.0	29.3	83.3	144.8	853.5
1999-00								
July	377.8	90.7	52.0	87.7	30.0	85.0	146.3	869.6
August	382.1	92.7	53.7	89.7	30.4	90.7	142.6	881.9
September	378.8	93.4	53.7	91.8	33.2	89.1	149.1	889.2
October	379.1	93.0	53.4	93.2	29.0	90.1	158.7	896.6
November	381.4	94.5	52.9	94.3	32.4	93.6	154.8	903.9
December	378.2	91.0	54.0	88.1	33.7	94.2	150.2	889.3
January	369.3	92.3	48.6	92.6	28.0	91.8	165.3	887.8
February	375.5	90.1	48.4	90.9	29.3	93.5	160.9	888.6
March	381.6	92.8	46.6	96.6	30.3	93.1	157.3	898.3
April	392.2	92.8	46.2	92.2	26.7	90.9	146.6	887.6
May	397.6	94.7	49.8	98.9	26.1	91.2	148.3	906.7
June	392.3	110.6	56.7	115.8	26.2	93.4	150.5	945.5
2000-01								
July	376.2	76.5	41.6	91.7	26.5	95.2	159.2	866.9

(a) Retail turnover trend series in current price terms has been replaced by seasonally adjusted data. For more information see Changes in this issue or *Retail Trade, Australia, July 2000* (Cat. no. 8501.0).

Source: *Retail Trade, Australia* (Cat. no. 8501.0).

10

NEW MOTOR VEHICLE REGISTRATIONS, BY TYPE OF VEHICLE(a)

Period	Original			Seasonally adjusted			Trend estimate		
	Passenger vehicles	Other vehicles	Total	Passenger vehicles	Other vehicles	Total	Passenger vehicles	Other vehicles	Total
1998-99									
April	3 256	559	3 815	3 488	601	4 089	3 564	603	4 167
May	3 294	672	3 966	3 459	619	4 078	3 476	620	4 096
June	3 838	856	4 694	3 386	621	4 007	3 347	646	3 993
1999-00									
July	3 429	689	4 118	3 274	718	3 992	3 222	671	3 893
August	3 149	702	3 851	3 047	741	3 788	3 148	689	3 837
September	3 120	531	3 651	3 039	559	3 598	3 149	695	3 844
October	2 983	676	3 659	3 027	797	3 824	3 210	690	3 900
November	3 656	679	4 335	3 423	684	4 107	3 276	676	3 952
December	3 729	694	4 423	3 553	627	4 180	3 327	655	3 982
January	2 462	464	2 926	3 265	617	3 882	3 296	635	3 931
February	3 269	599	3 868	3 315	635	3 950	3 195	622	3 817
March	3 289	705	3 994	3 007	622	3 629	3 080	615	3 695
April	2 400	500	2 900	2 825	564	3 389	3 012	615	3 627
May	3 171	725	3 896	3 210	625	3 835	3 015	617	3 632
June	2 720	943	3 663	2 261	698	2 959	3 073	617	3 690
2000-01									
July	4 078	537	4 615	4 072	558	4 630	3 178	615	3 793

(a) Trend estimates for January 2000 to June 2000 have been revised. For more information see *New Motor Vehicle Registrations, Australia, Preliminary* (Cat. no. 9301.0).

Source: *New Motor Vehicle Registrations, Australia, Preliminary* (Cat. no. 9301.0) and unpublished data.

11

ACTUAL PRIVATE NEW CAPITAL EXPENDITURE, BY SELECTED INDUSTRY AND TYPE OF ASSET

Period	Industry			Total	Type of asset	
	Mining	Manufacturing	Other selected industries		New buildings and structures	Equipment, plant and machinery
ANNUAL (\$M)						
1997-98	1 366	820	1 006	3 192	792	2 400
1998-99	508	776	992	2 277	529	1 748
1999-00	242	854	1 358	2 455	619	1 836
QUARTERLY, ORIGINAL (\$M)						
1998-99						
March	98	187	220	505	97	407
June	136	188	180	504	103	401
1999-00						
September	71	163	391	625	125	500
December	50	232	249	530	117	413
March	55	208	341	603	157	446
June	67	252	378	696	220	476
QUARTERLY, TREND (\$M)						
1998-99						
March	n.a.	n.a.	n.a.	553	117	436
June	n.a.	n.a.	n.a.	549	107	442
1999-00						
September	n.a.	n.a.	n.a.	558	109	449
December	n.a.	n.a.	n.a.	585	134	451
March	n.a.	n.a.	n.a.	622	167	455
June	n.a.	n.a.	n.a.	650	196	454

Source: State Estimates of Private New Capital Expenditure (Cat. no. 5646.0).

12

TOURIST ACCOMMODATION

Period	Hotels with facilities				Motels and guesthouses				Serviced apartments			
	Estab-lish-ments	Guest rooms	Room occu-pancy	Takings	Estab-lish-ments	Guest rooms	Room occu-pancy	Takings	Estab-lish-ments	Guest rooms	Room occu-pancy	Takings
	no.	no.	%	\$'000	no.	no.	%	\$'000	no.	no.	%	\$'000
1997-98												
March	59	3 808	60.1	20 851	149	5 181	57.4	19 247	19	726	67.6	3 913
June	61	4 048	53.6	19 048	147	5 136	52.8	17 773	19	750	59.4	3 551
1998-99												
September	61	4 048	57.2	21 068	146	5 112	51.7	17 805	19	740	56.3	3 667
December	61	4 053	63.0	24 954	146	5 135	58.1	19 990	22	888	66.0	4 884
March	61	4 053	59.6	22 181	145	5 119	55.3	18 793	22	888	65.8	4 516
June	62	4 095	58.6	22 362	146	5 189	51.5	18 140	22	889	54.1	3 947
1999-00												
September	62	3 988	58.0	20 959	146	5 175	50.7	17 812	23	1 084	60.2	5 265
December	62	4 090	61.6	24 619	146	5 166	55.1	19 928	26	1 207	61.5	6 462
March	62	4 065	60.1	23 738	146	5 168	55.3	19 956	26	1 213	62.6	6 739

Source: Tourist Accommodation, Australia (Cat. no. 8635.0).

Period	Houses		Total dwelling units		New residential building \$m	Alterations and additions to residential building \$m	Total residential building \$m	Non-residential building \$m	Total building \$m
	Private sector	Total	Private sector	Total					
	no.	no.	no.	no.					
ANNUAL									
1997-98	6 187	6 380	6 997	7 215	630.2	127.8	758.0	602.2	1 360.1
1998-99	6 568	6 777	7 697	7 928	775.6	144.0	919.6	670.9	1 590.5
1999-00	8 290	8 392	9 804	9 913	1 016.8	174.9	1 191.7	585.7	1 777.4
MONTHLY, ORIGINAL									
1999-00									
July	615	620	837	842	101.8	14.1	115.9	31.7	147.6
August	663	669	765	771	76.4	15.5	91.9	37.5	129.4
September	731	772	866	907	88.5	15.9	104.3	49.2	153.5
October	667	681	777	794	79.6	14.0	93.7	31.6	125.2
November	892	904	981	993	101.4	15.5	116.9	36.2	153.1
December	736	736	842	842	85.8	13.4	99.2	129.5	228.8
January	649	649	712	712	69.7	11.4	81.1	18.5	99.6
February	836	838	1 071	1 073	111.8	18.7	130.5	43.3	173.9
March	807	809	972	974	99.7	15.8	115.5	59.0	174.5
April	561	565	635	643	64.9	11.8	76.7	58.7	135.3
May	616	625	755	764	73.4	17.3	90.7	66.1	156.8
June	517	524	591	598	63.9	11.5	75.4	24.3	99.7
2000-01									
July	443	461	689	710	83.5	9.3	92.8	60.6	153.4
MONTHLY, TREND									
1999-00									
July	595	613	710	730	74.3	14.1	88.5	35.5	123.9
August	630	648	744	764	77.6	14.1	91.8	37.1	128.8
September	683	700	795	813	81.8	14.1	95.9	37.7	133.6
October	746	761	856	872	86.8	14.1	100.9	37.5	138.4
November	804	815	920	931	92.1	14.4	106.5	36.8	143.3
December	842	849	970	977	96.8	14.8	111.6	37.6	149.2
January	846	849	985	988	98.8	15.4	114.2	39.9	154.1
February	809	810	954	955	96.6	15.7	112.3	43.3	155.7
March	741	743	884	887	90.8	15.5	106.3	46.9	153.2
April	658	663	797	803	83.3	14.9	98.1	49.4	147.5
May	574	581	715	723	75.8	13.9	89.7	50.1	139.8
June	498	508	640	652	69.3	12.8	82.1	49.4	131.4
2000-01									
July	429	442	579	594	63.9	11.6	75.5	48.3	123.8

Source: Building Approvals, South Australia (Cat. no. 8731.4); Unpublished data, Building Approvals.

14

BUILDING COMMENCEMENTS

Period	New houses		Total dwelling units(a)		New residential building \$m	Alterations and additions to residential building \$m	Non-residential building		
	Private sector	Total	Private sector	Total			Private sector	Total	Total building
	no.	no.	no.	no.			\$m	\$m	\$m
1996-97	5 057	5 112	5 727	5 789	496.3	116.9	423.4	568.7	1 181.9
1997-98	5 628	5 823	6 437	6 653	614.7	134.5	426.4	550.7	1 299.9
1998-99	6 091	6 296	7 186	7 416	771.3	139.7	400.1	623.7	1 534.7
1997-98									
March	1 409	1 436	1 617	1 648	150.1	38.7	68.1	95.2	284.0
June	1 334	1 397	1 490	1 558	152.9	30.4	134.5	169.1	352.4
1998-99									
September	1 563	1 610	1 927	1 980	184.7	35.0	89.5	131.1	350.7
December	1 644	1 699	1 891	1 965	231.1	34.3	94.6	134.8	400.2
March	1 293	1 326	1 612	1 645	171.6	32.7	145.6	235.5	439.8
June	1 591	1 661	1 756	1 826	183.9	37.8	71.0	122.9	344.6
1999-00									
September	1 752	1 792	2 116	2 166	251.2	42.6	84.1	109.3	403.1
December	1 947	2 007	2 264	2 327	250.9	45.2	92.7	132.2	428.3
March	2 044	2 054	2 393	2 403	269.8	47.4	67.1	179.1	496.2

(a) Includes conversions.

Source: Building Activity, South Australia (Cat. no. 8752.4).

VALUE OF BUILDING WORK DONE AND COMPLETED DURING PERIOD

Period	New houses		New residential building			Non-residential building		Total building		
	Private sector	Total	Private sector	Total	Alterations and additions to residential building	Total residential building	Private sector	Total	Private sector	Total
	\$m	\$m	\$m	\$m	\$m	\$m	\$m	\$m	\$m	\$m
VALUE OF BUILDING WORK DONE										
1996-97	433.9	438.9	485.2	490.4	122.3	612.7	444.2	663.3	1 049.8	1 275.9
1997-98	522.9	535.7	590.4	605.4	131.6	737.0	538.9	685.0	1 259.3	1 422.0
1998-99	599.4	614.6	720.8	737.7	147.7	885.4	417.1	571.6	1 283.8	1 457.0
1997-98										
March	130.5	132.8	147.4	149.9	31.4	181.3	119.1	149.2	297.7	330.4
June	135.9	139.4	154.5	158.5	31.2	189.7	112.3	151.5	297.9	341.1
1998-99										
September	150.9	155.8	175.8	180.9	39.8	220.7	135.5	162.9	350.5	383.6
December	151.4	155.1	185.6	189.9	40.3	230.1	121.5	160.4	347.0	390.6
March	142.4	144.9	169.5	172.5	33.2	205.7	87.5	131.1	290.1	336.8
June	154.7	158.9	189.9	194.4	34.4	228.9	72.6	117.2	296.2	346.1
1999-00										
September	166.8	171.9	212.6	218.4	41.3	259.8	116.7	171.5	369.4	431.3
December	187.5	192.0	227.3	232.1	46.8	278.9	101.0	149.2	374.3	428.1
March	193.3	196.4	235.6	238.7	45.4	284.1	85.6	142.3	366.1	426.5
VALUE OF BUILDING WORK COMPLETED										
1996-97	408.9	414.1	461.8	467.1	123.6	590.7	328.2	584.3	911.8	1 175.0
1997-98	504.1	514.7	561.8	574.7	125.0	699.7	571.2	744.0	1 256.3	1 443.7
1998-99	600.6	614.8	700.0	715.2	153.2	868.4	505.3	639.4	1 356.8	1 507.8
1997-98										
March	112.2	114.5	126.4	129.3	26.9	156.3	81.7	124.3	235.0	280.5
June	125.3	128.1	136.0	139.8	24.6	164.4	110.1	148.0	270.6	312.5
1998-99										
September	148.1	152.4	161.1	165.8	36.1	201.9	68.2	106.7	264.9	308.6
December	168.4	174.1	190.2	196.1	49.3	245.4	174.9	203.3	414.1	448.7
March	145.1	147.6	180.1	183.0	36.7	219.7	161.3	207.4	377.8	427.1
June	139.0	140.7	168.6	170.3	31.0	201.4	101.0	122.0	300.0	323.3
1999-00										
September	148.9	154.7	170.2	177.7	38.5	216.2	67.9	104.1	275.4	320.2
December	190.6	195.1	221.7	226.5	45.5	272.0	124.7	161.8	391.3	433.8
March	153.5	157.6	175.2	179.3	42.0	221.3	92.8	138.5	309.1	359.7

Source: Building Activity, South Australia (Cat. no. 8752.4).

<i>Period</i>	<i>Pigmeat</i>	<i>Beef</i>	<i>Mutton</i>	<i>Lamb</i>	<i>Gas</i>	<i>Coal(a)</i>	<i>Sawn timber(b)</i>
	<i>tonnes</i>	<i>tonnes</i>	<i>tonnes</i>	<i>tonnes</i>	<i>m MJ</i>	<i>tonnes</i>	<i>m³</i>
1997-98	28 489	80 924	58 554	38 224	78 441	2 815 870	361 257
1998-99	30 864	62 266	48 029	44 173	86 228	2 686 069	374 590
1999-00	31 927	78 001	28 970	56 668	87 442	2 920 944	425 549
1997-98							
June	7 923	18 786	10 752	11 106	19 404	733 804	96 223
1998-99							
September	6 782	15 160	10 348	10 738	23 573	748 575	95 339
December	7 269	17 609	15 737	10 997	19 718	671 040	94 578
March	8 031	14 780	14 029	10 101	19 343	826 095	88 282
June	8 782	14 717	7 915	12 337	23 594	440 359	96 391
1999-00							
September	7 294	17 107	5 654	11 492	22 162	783 227	111 075
December	7 504	18 401	8 714	11 944	20 992	684 296	93 802
March	8 245	21 743	8 810	14 475	21 790	747 472	112 949
June	8 884	20 750	5 792	18 757	22 498	705 949	107 723

(a) Data supplied by Flinders Power Pty Ltd.

(b) From Australian softwood logs only.

Source: *Livestock Products, Australia* (Cat. no. 7215.0); *Unpublished data, Manufacturing Production*.

<i>Period</i>	<i>Food</i>	<i>Clothing</i>	<i>Housing</i>	<i>Household equipment and operation</i>	<i>Transport- ation</i>	<i>Tobacco and alcohol</i>	<i>Health and personal care</i>	<i>Recreation and education</i>	<i>All groups</i>
ANNUAL AVERAGE (1989-90 = 100.0)									
1997-98	122.7	105.7	90.7	113.7	122.1	169.3	165.4	124.7	121.6
1998-99	127.7	105.0	92.0	113.3	121.6	171.8	164.2	127.5	123.2
1999-00	130.8	103.3	97.0	112.9	129.4	179.1	158.7	129.6	126.3
QUARTERLY (1989-90 = 100.0)									
1998-99									
March	128.0	103.7	92.2	112.3	120.9	171.8	156.6	128.6	122.7
June	128.8	105.7	92.8	113.2	122.4	173.3	157.5	128.9	123.6
1999-00									
September	129.7	104.8	95.0	112.5	127.8	174.4	157.6	129.8	125.1
December	130.4	102.5	96.9	112.7	127.4	177.8	157.1	129.8	125.7
March	131.2	101.9	97.9	112.9	130.4	181.6	159.6	129.4	126.8
June	131.9	104.0	98.3	113.4	131.9	182.5	160.4	129.5	127.6
PERCENTAGE CHANGE FROM SAME QUARTER OF PREVIOUS YEAR									
1998-99									
March	4.1	-1.3	2.6	-1.2	-0.2	0.6	-6.7	2.5	0.8
June	4.1	-0.2	2.8	-0.6	0.5	1.6	-7.9	2.2	1.0
1999-00									
September	3.0	-0.5	4.2	-1.1	4.9	2.2	-8.3	3.1	1.7
December	1.7	-2.8	5.4	-1.1	5.0	3.7	-8.1	2.6	1.7
March	2.5	-1.7	6.2	0.5	7.9	5.7	1.9	0.6	3.3
June	2.4	-1.6	5.9	0.2	7.8	5.3	1.8	0.5	3.2
PERCENTAGE CHANGE FROM PREVIOUS QUARTER									
1998-99									
March	-0.2	-1.6	0.3	-1.4	-0.3	0.2	-8.4	1.7	-0.7
June	0.6	1.9	0.7	0.8	1.2	0.9	0.6	0.2	0.7
1999-00									
September	0.7	-0.9	2.4	-0.6	4.4	0.6	0.1	0.7	1.2
December	0.5	-2.2	2.0	0.2	-0.3	1.9	-0.3	0.0	0.5
March	0.6	-0.6	1.0	0.2	2.4	2.1	1.6	-0.3	0.9
June	0.5	2.1	0.4	0.4	1.2	0.5	0.5	0.1	0.6

Source: Consumer Price Index (Cat. no. 6401.0).

18

ESTIMATED RESIDENT POPULATION AND COMPONENTS OF POPULATION CHANGE

Period	Net migration			Total increase	Population at end of period
	Natural increase	Interstate	Overseas(a)		
1996-97	6 951	-4 628	3 104	5 427	1 479 680
1997-98	6 602	-3 254	3 390	7 638	1 486 418
1998-99	6 593	-2 869	2 932	6 656	1 493 074
1997-98					
March	2 074	-591	1 291	2 744	1 485 206
June	1 471	-810	551	1 212	1 486 418
1998-99					
September	1 188	-422	778	1 544	1 487 962
December	1 775	-901	707	1 581	1 489 543
March	1 917	-682	1 149	2 384	1 491 927
June	1 713	-864	298	1 147	1 493 074
1999-00					
September	1 515	-600	784	1 699	1 494 773
December	1 540	-1 291	808	1 057	1 495 830

(a) Includes category jumping.

Source: Australian Demographic Statistics (Cat. no. 3101.0).

19

BIRTHS, DEATHS, MARRIAGES AND DIVORCES

Period	Registrations			
	Births	Deaths	Marriages	Divorces
1996-97	18 576	11 625	8 003	4 362
1997-98	18 330	11 728	7 988	4 113
1998-99	18 277	11 684	8 033	4 201
1997-98				
March	4 599	2 525	2 405	1 016
June	4 479	3 008	1 824	1 005
1998-99				
September	4 648	3 460	1 294	1 053
December	4 545	2 770	2 499	1 085
March	4 490	2 573	2 471	929
June	4 594	2 881	1 769	1 134
1999-00				
September	4 722	3 207	1 259	1 058
December	4 139	2 599	2 737	1 190

Source: Australian Demographic Statistics (Cat. no. 3101.0).

Period	Employed full-time		Employed part-time		Total employed		Unemployed		Labour force	
	Males	Females	Males	Females	Males	Females	Males	Females	Males	Females
ANNUAL AVERAGE ('000)										
1997-98	317.5	145.9	48.8	136.4	366.3	282.3	42.1	28.8	408.4	311.0
1998-99	319.4	148.1	49.2	136.2	368.6	284.3	40.2	26.6	408.8	310.9
1999-00	321.9	152.4	55.9	141.4	377.8	293.9	35.3	25.0	413.0	318.9
MONTHLY, ORIGINAL ('000)										
1998-99										
June	319.3	146.3	55.9	141.8	375.3	288.1	31.0	25.0	406.3	313.1
1999-00										
July	320.3	152.1	53.7	137.4	374.0	289.5	30.7	23.6	404.7	313.1
August	315.4	151.1	56.0	137.4	371.3	288.5	36.5	24.5	407.9	313.0
September	317.6	150.9	56.6	144.0	374.2	294.9	34.1	26.4	408.3	321.3
October	313.7	153.7	59.4	138.8	373.1	292.5	37.4	25.0	410.5	317.5
November	317.5	153.7	55.0	146.7	372.5	300.4	34.4	21.5	406.8	321.9
December	326.8	160.3	59.7	145.3	386.6	305.6	35.0	24.2	421.6	329.8
January	317.4	147.6	56.7	144.4	374.1	292.1	36.8	24.9	410.9	317.0
February	328.4	154.9	52.6	136.7	381.0	291.5	38.1	30.4	419.2	322.0
March	327.6	152.5	55.8	141.7	383.4	294.2	33.0	26.8	416.3	321.0
April	325.6	149.9	56.9	143.9	382.5	293.9	35.2	25.4	417.7	319.3
May	323.3	148.0	55.8	142.8	379.1	290.9	38.3	24.9	417.4	315.8
June	328.9	154.6	52.1	137.6	380.9	292.2	33.5	22.3	414.5	314.6
2000-01										
July	332.2	155.9	52.2	140.8	384.4	296.7	31.3	22.3	415.7	319.0
August	327.7	158.2	54.5	138.4	382.2	296.6	31.9	22.9	414.1	319.5
MONTHLY, TREND ('000)										
1998-99										
June	319.7	151.3	53.2	137.0	372.9	288.3	34.9	25.8	407.8	314.1
1999-00										
July	318.2	151.8	55.0	137.5	373.2	289.3	34.6	25.8	407.8	315.1
August	316.8	152.3	56.5	138.6	373.3	290.9	34.7	25.7	408.0	316.6
September	315.8	152.6	57.7	140.2	373.5	292.8	34.9	25.3	408.4	318.1
October	315.8	152.8	58.3	142.1	374.1	294.9	35.1	24.9	409.2	319.8
November	316.9	152.9	58.5	143.5	375.4	296.4	35.0	24.6	410.4	321.0
December	319.2	152.6	58.1	144.6	377.3	297.2	34.8	24.6	412.1	321.8
January	322.1	152.1	57.1	144.7	379.2	296.8	34.7	24.9	413.9	321.7
February	325.0	151.5	55.7	144.1	380.7	295.6	35.0	25.1	415.7	320.7
March	327.1	151.4	54.5	142.7	381.6	294.1	35.4	25.3	417.0	319.4
April	328.4	151.9	53.6	141.3	382.0	293.2	35.7	25.1	417.7	318.3
May	328.9	153.1	53.3	140.3	382.2	293.4	35.8	24.7	418.0	318.1
June	329.2	154.6	53.2	139.7	382.4	294.3	35.4	24.2	417.8	318.5
2000-01										
July	329.5	156.3	53.3	139.2	382.8	295.5	34.8	23.9	417.6	319.4
August	329.2	157.7	53.7	139.4	382.9	297.1	34.1	23.4	417.0	320.5

(a) Population aged 15 and over.

Source: Labour Force, Australia, Preliminary (Cat. no. 6202.0).

21

CIVILIAN LABOUR FORCE, UNEMPLOYMENT AND PARTICIPATION RATES(a)

Period	Civilian population			Unemployment rate			Participation rate		
	Males aged 15 and over	Females aged 15 and over	Persons aged 15-19	Males all ages	Females all ages	Persons all ages	Males	Females	Persons
	'000	'000	%	%	%	%	%	%	%
ANNUAL AVERAGE									
1997-98	583.9	604.5	23.2	10.3	9.2	9.8	70.8	51.5	61.0
1998-99	583.2	609.8	21.7	9.8	8.6	9.3	70.1	51.0	60.3
1999-00	636.8	665.1	22.1	9.2	8.4	8.9	76.2	56.3	65.0
MONTHLY, ORIGINAL									
1998-99									
June	585.3	611.9	21.6	7.6	8.0	7.8	69.4	51.2	60.1
1999-00									
July	585.7	612.3	21.4	7.6	7.5	7.6	69.1	51.1	59.9
August	586.0	612.6	22.1	9.0	7.8	8.5	69.6	51.1	60.1
September	586.4	613.0	20.6	8.4	8.2	8.3	69.6	52.4	60.8
October	586.8	613.3	21.1	9.1	7.9	8.6	70.0	51.8	60.7
November	587.1	613.6	22.1	8.5	6.7	7.7	69.3	52.5	60.7
December	587.5	613.8	20.0	8.3	7.3	7.9	71.8	53.7	62.5
January	587.8	614.0	21.8	9.0	7.8	8.5	69.9	51.6	60.6
February	588.1	614.2	23.3	9.1	9.5	9.3	71.3	52.4	61.6
March	588.4	614.4	22.0	7.9	8.4	8.1	70.8	52.3	61.3
April	588.8	614.7	19.3	8.4	8.0	8.2	70.9	51.9	61.2
May	589.2	614.9	19.4	9.2	7.9	8.6	70.8	51.4	60.9
June	589.6	615.2	17.5	8.1	7.1	7.7	70.3	51.1	60.5
2000-01									
July	590.0	615.5	15.1	7.5	7.0	7.3	70.5	51.8	61.0
August	590.4	615.8	20.5	7.7	7.2	7.5	70.1	51.9	60.8
MONTHLY, TREND									
1998-99									
June	n.a.	n.a.	n.a.	8.5	8.2	8.4	69.7	51.3	60.3
1999-00									
July	n.a.	n.a.	n.a.	8.5	8.2	8.4	69.6	51.5	60.4
August	n.a.	n.a.	n.a.	8.5	8.1	8.3	69.6	51.7	60.4
September	n.a.	n.a.	n.a.	8.5	8.0	8.3	69.7	51.9	60.6
October	n.a.	n.a.	n.a.	8.6	7.8	8.2	69.7	52.1	60.7
November	n.a.	n.a.	n.a.	8.5	7.7	8.1	69.9	52.3	60.9
December	n.a.	n.a.	n.a.	8.4	7.7	8.1	70.1	52.4	61.1
January	n.a.	n.a.	n.a.	8.4	7.7	8.1	70.4	52.4	61.2
February	n.a.	n.a.	n.a.	8.4	7.8	8.2	70.7	52.2	61.2
March	n.a.	n.a.	n.a.	8.5	7.9	8.2	70.9	52.0	61.2
April	n.a.	n.a.	n.a.	8.6	7.9	8.3	70.9	51.8	61.2
May	n.a.	n.a.	n.a.	8.6	7.8	8.2	70.9	51.7	61.1
June	n.a.	n.a.	n.a.	8.5	7.6	8.1	70.9	51.8	61.1
2000-01									
July	n.a.	n.a.	n.a.	8.3	7.5	8.0	70.8	51.9	61.1
August	n.a.	n.a.	n.a.	8.2	7.3	7.8	70.6	52.1	61.2

(a) Population aged 15 and over.

Source: Labour Force, Australia, Preliminary (Cat. no. 6202.0).

AVERAGE WEEKLY EARNINGS OF EMPLOYEES

Period	Males			Females			Persons		
	Full-time adult ordinary time earnings	Full-time adult total earnings	All males total earnings	Full-time adult ordinary time earnings	Full-time adult total earnings	All females total earnings	Full-time adult ordinary time earnings	Full-time adult total earnings	All employees total earnings
ANNUAL AVERAGE (\$ per week)									
1996-97	678.20	735.10	636.90	575.10	589.40	408.70	644.30	687.20	529.80
1997-98	705.60	755.05	646.28	606.05	619.33	438.50	670.53	707.20	545.70
1998-99	741.20	797.55	678.28	627.93	647.28	464.35	699.13	741.70	575.23
QUARTERLY, ORIGINAL (\$ per week)									
1998-99									
19 February	739.90	796.20	677.40	632.00	651.90	466.50	699.60	742.30	574.90
21 May	742.20	796.80	686.30	624.70	648.00	457.30	699.70	742.90	576.10
1999-00									
20 August	742.70	792.00	669.30	631.20	655.70	451.20	702.00	742.20	560.40
19 November	745.30	805.60	697.40	638.70	663.40	453.80	705.70	752.70	572.80
18 February	768.60	821.20	708.30	645.30	656.80	461.30	723.00	760.30	584.50
19 May	77.40	831.30	705.00	651.40	677.20	462.60	726.80	774.80	585.90
QUARTERLY, TREND (\$ per week)									
1998-99									
19 February	743.30	801.00	679.30	628.60	649.60	465.30	701.00	745.00	576.40
21 May	740.70	796.50	677.30	629.00	653.20	458.10	699.90	743.80	570.10
1999-00									
20 August	742.70	796.50	694.00	632.00	655.70	453.80	702.10	744.80	569.00
19 November	751.40	805.40	702.00	637.80	658.80	455.20	709.40	751.50	574.00
18 February	762.10	817.80	707.60	644.00	663.10	458.40	718.60	760.90	579.70
19 May	773.40	831.90	707.60	650.00	669.20	461.70	728.40	772.10	585.10

Source: Average Weekly Earnings, States and Australia (Cat. no. 6302.0).

23

SECURED HOUSING FINANCE COMMITMENTS(a)

Period	Original		Seasonally adjusted		Trend	
	Dwelling units	Value	Dwelling units	Value	Dwelling units	Value
	no.	\$m	no.	\$m	no.	\$m
1998-99						
May	3 237	301	3 226	301	3 238	303
June	3 592	342	3 335	321	3 341	318
1999-00						
July	3 397	319	3 502	332	3 474	335
August	3 419	331	3 561	349	3 616	352
September	3 545	349	3 573	354	3 753	367
October	3 708	370	4 106	407	3 863	379
November	4 310	422	4 038	393	3 916	385
December	3 924	390	3 786	363	3 911	385
January	3 154	313	3 806	381	3 847	380
February	3 976	398	3 904	392	3 745	371
March	4 236	417	3 572	350	3 638	362
April	3 099	309	3 368	334	3 555	355
May	4 003	401	3 713	373	3 492	348
June	3 510	354	3 204	331	3 445	342
2000-01						
July	3 374	318	3 565	338	3 408	336

(a) Excludes alterations and additions. Includes refinancing.

Source: Housing Finance for Owner Occupation, Australia (Cat. no. 5609.0).

24

FINANCE COMMITMENTS

Period	Commercial finance commitments			Personal finance commitments			
	Fixed loan facilities	Revolving credit facilities	Total commercial finance commitments	Fixed loan facilities	Revolving credit facilities	Total personal finance commitments	Total lease finance commitments
	\$m	\$m	\$m	\$m	\$m	\$m	\$m
1998-99							
May	272.4	202.3	474.7	120.9	131.5	252.5	39.3
June	356.6	382.2	738.9	135.0	140.7	275.7	40.6
1999-00							
July	253.4	261.8	515.2	122.6	132.1	254.7	23.4
August	412.9	255.3	668.3	124.3	127.6	251.9	26.6
September	265.9	206.5	472.4	126.6	140.0	266.6	19.8
October	325.5	209.8	535.3	125.0	128.0	253.0	14.7
November	289.4	221.8	511.2	128.9	151.3	280.2	12.7
December	380.7	296.0	676.8	124.7	143.8	268.5	13.4
January	272.3	134.8	407.1	122.6	94.8	217.4	10.2
February	301.4	201.0	502.4	138.4	120.8	259.2	18.0
March	423.5	240.8	664.3	155.3	159.3	314.7	12.3
April	395.1	176.4	571.5	108.2	135.6	243.7	17.7
May	333.1	249.9	583.1	139.5	156.1	295.6	16.7
June	781.7	392.6	1 174.2	154.0	147.9	301.9	18.4
2000-01							
July	370.5	256.5	627.0	112.8	147.0	259.9	9.8

Source: Unpublished data, PC Ausstats.

PUBLICATIONS SOURCE INDEX

- (1) *Australian National Accounts, Quarterly State Details*
(Cat. no. 5206.0.40.001)
- (2) *International Merchandise Trade, Australia*
(Cat. no. 5422.0) Quarterly
- (3) *Retail Trade, Australia* (Cat. no. 8501.0) Monthly
- (4) *New Motor Vehicles Registrations, Australia, Preliminary*
(Cat. no. 9301.0) Monthly
- (5) *State Estimates of Private New Capital Expenditure*
(Cat. no. 5646.0) Quarterly
- (6) *Tourist Accommodation, Australia* (Cat. no. 8635.0) Quarterly
- (7) *Building Approvals, Australia* (Cat. no. 8731.0) Monthly
- (8) *Building Activity, Australia* (Cat. no. 8752.0) Quarterly
- (8a) *Building Activity, Australia, Dwelling Unit Commencements, Preliminary* (Cat. no. 8750.0) Quarterly
- (9) *Engineering Construction Activity, Australia*
(Cat. no. 8762.0) Quarterly
- (10) *Manufacturing Production, Australia, Preliminary*
(Cat. no. 8301.0) Quarterly
- (11) *Livestock Products, Australia* (Cat. no. 7215.0) Quarterly
- (12) *Actual and Expected Private Mineral Exploration, Australia*
(Cat. no. 8412.0) Quarterly
- (13) *Consumer Price Index* (Cat. no. 6401.0) Quarterly
- (14) *Price Index of Materials Used in House Building, Six State Capital Cities and Canberra* (Cat. no. 6408.0) Quarterly
- (15) *Price Index of Materials Used in Building Other Than House Building, Six State Capital Cities and Canberra*
(Cat. no. 6407.0) Quarterly
- (16) *House Price Indexes: Eight Capital Cities*
(Cat. no. 6416.0) Quarterly
- (17) *Australian Demographic Statistics* (Cat. no. 3101.0) Quarterly
- (18) *Labour Force, Australia, Preliminary* (Cat. no. 6202.0) Monthly
- (19) *Job Vacancies, Australia* (Cat. no. 6354.0) Quarterly
- (20) *Industrial Disputes, Australia* (Cat. no. 6321.0) Monthly
- (21) Unpublished overseas arrival and departure statistics
- (22) *Average Weekly Earnings, States and Australia*
(Cat. no. 6302.0) Quarterly
- (23) *Wage Cost Index, Australia* (Cat. no. 6345.0) Quarterly
- (24) *Housing Finance for Owner Occupation, Australia*
(Cat. no. 5609.0) Monthly
- (25) Unpublished statistics available from PC AUSSTATS
- (26) *Reserve Bank of Australia Bulletin*

FOR MORE INFORMATION...

- INTERNET* **www.abs.gov.au** the ABS web site is the best place to start for access to summary data from our latest publications, information about the ABS, advice about upcoming releases, our catalogue, and Australia Now—a statistical profile.
- LIBRARY* A range of ABS publications is available from public and tertiary libraries Australia-wide. Contact your nearest library to determine whether it has the ABS statistics you require, or visit our web site for a list of libraries.
- CPI INFOLINE* For current and historical Consumer Price Index data, call 1902 981 074 (call cost 77c per minute).
- DIAL-A-STATISTIC* For the latest figures for National Accounts, Balance of Payments, Labour Force, Average Weekly Earnings, Estimated Resident Population and the Consumer Price Index call 1900 986 400 (call cost 77c per minute).

INFORMATION SERVICE

Data which have been published and can be provided within five minutes are free of charge. Our information consultants can also help you to access the full range of ABS information—ABS user-pays services can be tailored to your needs, time frame and budget. Publications may be purchased. Specialists are on hand to help you with analytical or methodological advice.

- PHONE* **1300 135 070**
- EMAIL* **client.services@abs.gov.au**
- FAX* 1300 135 211
- POST* Client Services, ABS, GPO Box 796, Sydney 1041

WHY NOT SUBSCRIBE?

ABS subscription services provide regular, convenient and prompt deliveries of ABS publications and products as they are released. Email delivery of monthly and quarterly publications is available.

- PHONE* 1300 366 323
- EMAIL* subscriptions@abs.gov.au
- FAX* 03 9615 7848
- POST* Subscription Services, ABS, GPO Box 2796Y, Melbourne 3001



2130740010002
ISSN 1039-8880

RRP \$18.50